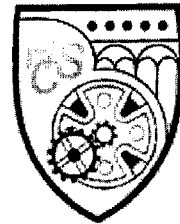


Hayle Community School
Consultation Report
February 2007



In partnership with



Penwith
District Council

CONTENTS OF REPORT

	Page No
1. Introduction and background	3
2. Rationale behind the consultations	3
3. Details of the consultations	4
4. Consultation results	
a) Profile of students taking part	5
b) Graffiti board comments	6-9
5. Overview of the consultation	10
6. Conclusions	12
7. Appendices	
• Data collection sheet	14
• Consultation poster	16
• Photographic evidence of graffiti boards	18-20

1. INTRODUCTION AND BACKGROUND

'Churches Together in Hayle' and the **'Friends of Ellis Park'** are both community groups currently active in the Hayle area.

'Churches Together in Hayle' is a local ecumenical group, comprising of volunteer representatives from many different local churches, and a variety of different denominations. They are part of the larger organisation **'Churches Together in England'**. After running a course in 2006 called "Children.....Spirituality....Church" the group began to question whether they were doing enough for children and young people within their parishes. As a result **'Churches Together in Hayle'** are now aiming to broaden their approach to see how best they can respond to young peoples' needs.

The **'Friends of Ellis Park'** are a community based organisation comprising of volunteers and residents who are keen to explore improved facilities (particularly for children, families and young people) at their local green space – Ellis Park, in Hayle. They have already begun to raise funds towards new equipment by staging some successful community events. The group are currently working towards developing projects and ideas which will enable both young and older people to use, and enjoy the park, so maximising the benefits to the local community.

In Autumn 2006, the groups approached Penwith District Council (PDC) for advice in connection with their ideas for some local, community-based projects. These projects were aimed at supporting young people living in, and around, the Hayle and St Erth areas. After some initial discussions with members of Penwith District Council's Community Regeneration Team both groups were keen to formally canvass the opinions of local young people in an effort to assess the need for youth activities and equipment. It was decided that a formal consultation which allowed the young people to express their views both verbally and in writing via 'graffiti boards' would be the best way forward taking into consideration the advice and experience of PDC officers, and the contents of PDC's recently published 'Consultation Toolkit'.

2. RATIONALE BEHIND THE CONSULTATIONS

Hayle Community School offered their assistance with the consultations which enabled the groups to access a good cross-section of local young people aged between 11 -16. The consultations were carried out during a lunchtime period, and took the form of informal face-to-face interviews (to collect baseline data from the participants), together with large 'graffiti boards' for the young people to record their views on certain topics. Facilitators completed Data Collection Sheets (see Appendix 1) whilst talking with the students about the issues facing them as local residents. A presentation display comprising visual images, key questions, and large 'graffiti boards' was available to reinforce the discussions between facilitators and students. Large coloured marker pens were made available for use on the graffiti boards. All students at Hayle Community School were informed of the consultations by means of posters placed around the school (see Appendix 2), as well as special assemblies delivered to classes by Rev Carol Wilson-Barker. The community groups also provided free soft drinks and sweets to all participants as an incentive to take part!

3. DETAILS OF THE CONSULTATIONS

a) Facilitators

Rev. Carol Wilson-Barker	Churches Together
Neil Wilson-Barker	Friends of Ellis Park
Delia Webb	Penwith District Council (Community Regeneration Team)

b) Date and Time

Monday 12th February 2007 between 12.45 and 13.30 (during the lunchtime break).

c) Venue

Entrance Hall, Hayle Community School, Hayle, Cornwall.

d) Base line data

The gender, age, and home area of each participants was recorded by the facilitators via data collection sheets (see Appendix 1)

e) Key Questions

One of the following key questions was posed at the top of each graffiti board.

"Do you think Hayle and St Erth are good places for young people to live? (Please tell us your reasons too)."

"What would make Hayle and St Erth better places for young people to live in?"

"What activities do you and your friends enjoy, and where do you normally spend your freetime together?"

"Would you use any of the following if they were available close to where you live? (Please tick from a list of Youth Cafe, Youth Club, Youth Shelter, and Outdoor Fitness Equipment')."

"Where would you like to see these facilities located?" (same list as previous question).

Part of the facilitators role was to draw out the opinions of the young people by discussing and expanding upon these questions. They endeavoured to get the students to think about what the areas currently offered in the way of facilities for them, what they liked best (and least) about living there, ideas for improving facilities or access to them, etc. The terms 'Youth Cafe' and 'Youth Club' were described (for the purposes of this consultation) as follows;

Youth Cafe – somewhere indoors, that you could go to get a drink (tea, coffee, soft drink) and chat with friends.

Youth Club – somewhere with more structured activities, equipment, and youth workers to support these.

4. CONSULTATION RESULTS

a) Profile of students taking part in the consultations

Gender	Age						Total
	11	12	13	14	15	16	
Male	4	13	11	13	30	9	80
Female	20	29	13	14	8	10	94
Totals	24	42	24	27	38	19	174

Home Area	No of students
Hayle East (Copperhouse)	71
Hayle West (Foundry)	36
St Erth	23
Reawla	15
Connor Downs	13
Leedstown	8
Wall	2
Gwinear	2
Angarrack	1
Phillack	1
Camborne	1
Helston	1
TOTAL	174

b) Graffiti board comments

The photographic evidence of the graffiti boards is presented in Appendix 3 attached. The following is a transposed compilation of all the young people's comments.

QUESTION *"Do you think Hayle and St Erth are good places for young people to live? (Please tell us your reasons too)."*

Negative replies

No - because Hayle has nothing in it
No - because there is no entertainment
There is nothing creative to do
NO!
Its well boring because there is nothing to do
Hayle is boring
There is hardly anything to do
Scary people hang around Hayle
Its cold and wet and there's nowhere to go
Chavs pick on everyone
No - there are tramps around Hayle
No because there isn't enough stuff to do for girls - there is a skate park for boys but girls don't exactly want to go there!
We can't walk our dogs because cars keep coming past
We have an outdoor pool but it isn't open in winter so we could use an indoor pool.
Not enough for young people in St Erth
The Town is just a boy place - not for girls

Its scary
No - as it is full of old people
NO - dum chavs here
There is nothing in Hayle
The cinema shouldn't be closed
No
It doesn't always feel safe
Everything's for boys here
No - not enough stuff to do
Rugby, or skate parks aren't for girls!

Positive replies

OK!
Yes but I think we should have more excitement
Its ok, but it could be better as there is not much to do
Yes because of the skate park
Yes because of the rugby club

QUESTION

"What would make Hayle and St Erth better places for young people to live in?"

Reopen the cinema
Music and gigs
Part time Saturday jobs
Putting the BMX track back in St Erth
Somewhere for just the girls to go
Seats at the rec please or a youth shelter
Gigs
Dirt jumps
Anything that makes St Erth better for us
Somewhere cheap to go so we can afford it
Lights around the recreation ground
Shelters for the teenagers – somewhere to go
A night club for 16's and under
More things to do in St Erth
An arcade
No more OAP's
BMX
Gym equipment
More attractions for young people
More SK8 parks
More stuff in St Erth
A shelter for us
Lights at the skate park
BMX track
A BMX at St Erth like we used to have
A bigger and better indoor pool
A place to hang out that's a safe place
A sort of club for dogs and owners
St Erth should have more stuff
Dirt tracks and a BMX at the skate park
Safe places to walk with your dog
Teenagers shelter
Swimming pool (indoor)
Heated indoor swimming pool
More indoor pools
Youth club that's indoors and dry
A youth cafe
Toilets
Basketball
We need somewhere to go that's fun, warm, and cheap!
The skate park is more for boys – girls don't really want to do it, can we have some stuff for us
We need an amphitheatre near the skate park so we can have concerts and gigs...it would make loads of money and would only cost the price of the concrete to make a flat area – so buy it!
Seats that we are able to sit on – and make it sheltered

A youth club
Indoor swimming pool
Lights at Hayle skate park
More arts and craft activities
Youth discos
Concert house
To be able to write on a wall
Get the cinema back open
A teen shelter
Indoor swimming pool
A safe place to walk dogs (no cars)
Need a cinema!!
Running track
Girls only youth club
Play equipment at Ellis park
Make me rich
Youth shelter for us
Build an airport
Girls football and pitch
A cinema
More pubs
A bigger swimming pool
A disco hall for us
Lots of seating
Gyms
More homes
Girls only youth club
A netball court
More part time jobs for young people
Homes
BMX park in St Erth
Indoor swimming pool
Girls only youth club
Netball court
Youth club
More gigs and music
A KFC
A leisure centre like Penzance
Martial arts

A swimming pool but indoors
More play stuff and equipment at Ellis Park
Car racing at the Towans
Weights and gym equipment
Chip shop and a cafe
More stuff for us
More shops for girls
Netball court near the park
Places to live
Netball court
Netball court
A cinema
An indoor pool
More things to do for girls
Shops at the foundry
A cafe for us
Surf shops (at the foundry)
A place for us to hang out (girls)
Fun for everyone
Jobs
Youth club somewhere dry
Snooker
We need a cinema
Youth shelter like the one on the poster
BMX track at Leedstown with dirt jumps
Somewhere we feel safe going to where gangs can't pick on us.
Have a club at night for under 16 year olds
Make somewhere for the girls to go not just the boys
More shops like New Look, and Clares
More safe lights, cameras and protection
Manchester United to visit Hayle school!
If you could stop the different gangs who pick on people who aren't like them it would be really good – sometimes we can't go to some places because we're too scared.
A place for people to read poetry and get along
Could we have more stuff for younger people aged 7 years and lower please
A cafe open all year for cups of tea and drinks

More rugby
Nightclubs for year 7 upwards
Indoor pool please!
More parks and amusements
Youth club
Swings
Shops with make up
BMX
More shops in St Erth
KFC
More stuff at St Erth
We need a heated swimming pool
More shops in foundry
Fitness stuff at Ellis Park
Teen shelter
BMX track
BMX track in Connor Downs
A youth cafe and toilets
An arcade
An indoor swimming pool
A big pet shop
Cinema please!

QUESTION *"What activities do you and your friends enjoy, and where do you spend your freetime together?"*

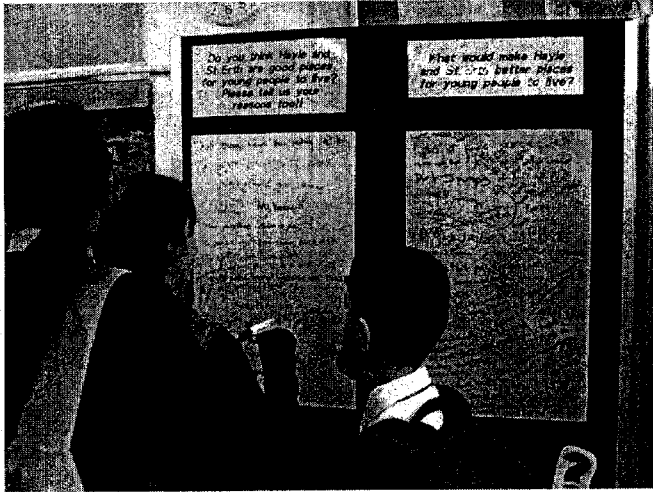
Listening to music	At the youth club (High Lanes)
At my mates	At home
Gigs and concerts	With my mates (in house)
Playing rugby and footy	Go to Truro
Pool and the beach	Playing netball
At Rob's mums	Drugs
Down by the swings	On my PSP (game console)
The rec	On the internet
Rec	At home
Beach	Football
Drunk	On my DS (game console)
Playing music	At the shop
At St George's	Shooting things
Dragging Bob across the floor in the hall	

QUESTIONS *"Would you use any of the following if they were available close to where you live? (Please tick)"*

"Where would you like to see these facilities located?"

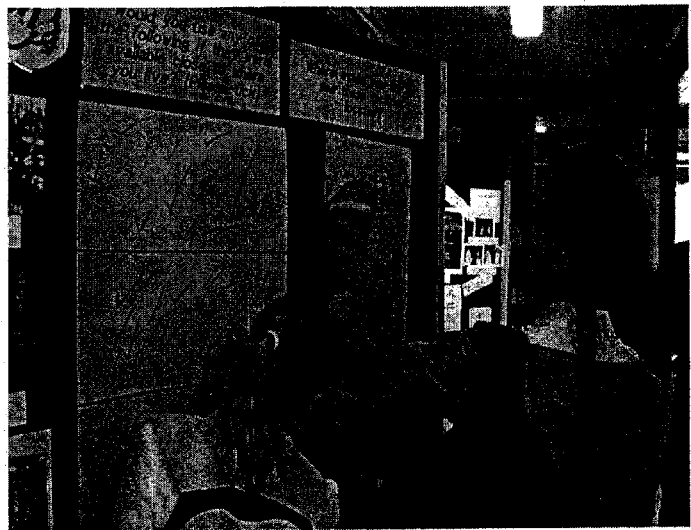
FACILITY	NO OF TICKS	SUGGESTED LOCATIONS
Youth Cafe	85	Centre of Hayle, Copperhouse, Carbis Bay, St Erth, St Ives, High Lanes, Helston, Ellis Park, Doctors surgery
Youth Club	80	St Erth, Portreath, Hayle East, School site, Carbis Bay, St Ives, Helston, Carnell Green, Reawla
Youth Shelter	49	Hayle, St Erth, St Ives, Near Hayle, Helston, Reawla
Outdoor Fitness Equipment	41	Hayle Rec, St Erth, Hayle harbour, Wall, Gwithian, Reawla, Helston, St Elwyns church field

5. OVERVIEW OF THE CONSULTATION



The consultation exercise proved to be very popular with the students at Hayle School. The event was extremely busy, with at least 174 students participating during the 45 minute period (The actual figure is probably slightly higher than this as some students wrote comments on the graffiti boards without their data being collected by the facilitators). All who took part seemed to enjoy the experience, and were keen to get their views across. Lively discussions took place between the facilitators and students resulting in many valuable comments being made.

The profile of students taking part in the exercise shows a good age range, gender mix, and geographical spread of participants, which means that we can be fairly confident that the results give an accurate picture of what local young people think. The facilitators also found that despite the fact that the free drinks and sweets ran out after around 15 minutes, those students arriving late still wanted to take part in the consultation – proving the issues were important to them. All the young people felt that their opinions would be listened to and valued.

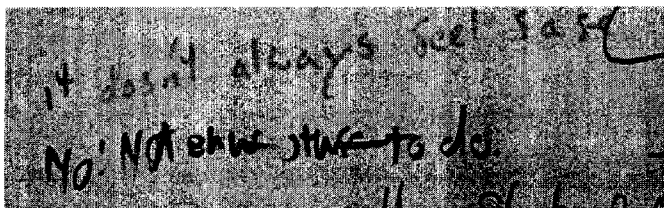


In total 193 separate comments were made on the graffiti boards, together with 257 'tick votes', a variety of suggested locations for the proposed youth facilities, and many verbal comments to the facilitators. Out of these written comments only a small handful appeared to be written 'tongue-in-cheek' or to undermine the exercise. Again this shows how seriously most of the students took the opportunity to voice their thoughts.

6. CONCLUSIONS

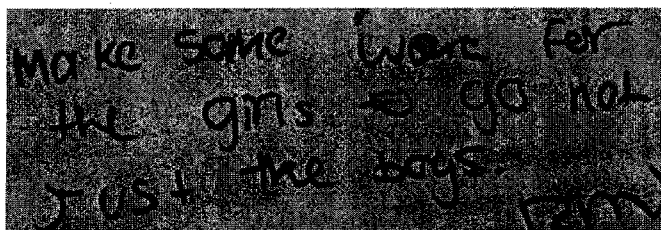
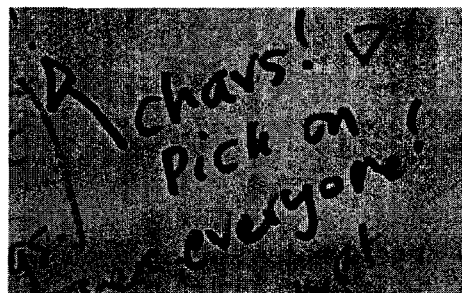
Some common themes came through the graffiti boards and facilitators discussions.

A good place to live?



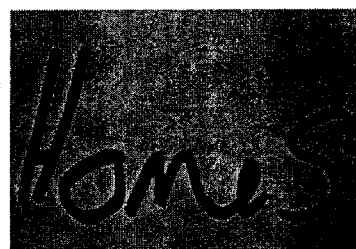
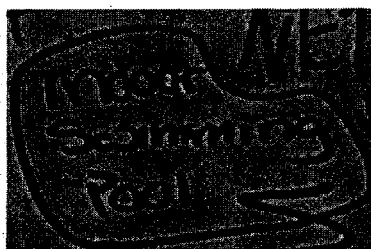
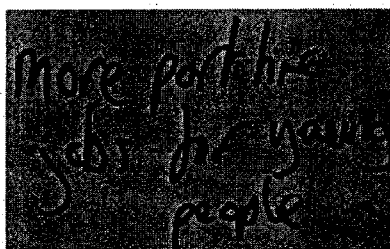
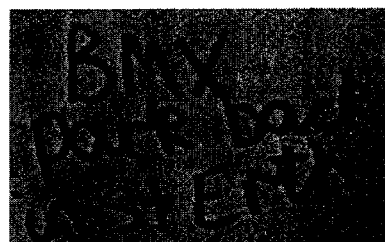
The young people's perception of their home areas was generally negative – the most common comments being that there isn't enough for them to do in their freetime, or enough safe places for them to go to be with friends.

Several of the younger students mentioned being afraid to go to some parts of Hayle for fear of being 'picked on'. Some spoke about different types of 'gangs' not getting along with each other – so making it difficult for those young people who wanted to go to places where they knew there would be confrontation. Many comments were made by the female students that there was a definite focus on boys activities such as skating and rugby – and they felt there was not enough local provision for girls.



Generally the male students seemed pleased with the skate park provision at the rec, and it appears to be well used – but they repeated requests for better lighting, seating, and more BMX tracks.

St Erth was constantly criticised for not having anything for young people to do, or anywhere for them to go. Many of the students asked for the BMX track (which had apparently been well used) to be put back. Similarly there was a large number of requests relating to Hayle, for an indoor swimming pool (the existing outdoor pool is seasonal and unheated), and cinema (which has been closed for many years).



The students also showed a clear awareness of broader issues facing their community, and mentioned the need for housing, and jobs, as well as facilities specifically for their age group.

Perhaps the most common need highlighted by students (male and female) was a very simple one -i.e safe, warm, dry, and affordable places for them to go to 'hang out' with their friends. The idea of a youth cafe, or club was extremely popular. This was reinforced by the 'tick voting' boards and discussions around the suggested facilities 'youth cafe', 'youth club' 'youth shelter' and 'outdoor fitness equipment'. There was a fairly even, positive vote for cafes and clubs, and a slightly lower one (but still positive) for shelters and fitness equipment. There would seem to be a huge support for these types of provisions across many local communities. As far as any gender preference is concerned, the female students (in general) seemed to favour unstructured places to meet to chat with friends (either indoor venues or outdoor shelters) whilst the male students were keen to meet up with friends and be able participate in sporting or recreational activities if possible.

Surprisingly very few students said they used the existing youth clubs in Hayle, and some were unaware of their existence. There seems to be an opportunity for those clubs to raise local awareness of the services and facilities they currently provide.

Similarly very few students seemed to know where Ellis Park was sited, and what facilities it currently offered. The consultation exercise in itself proved useful in bringing the park's existence to the attention of these local young people, and hopefully giving them the incentive to visit the park in the future.

Clearly this consultation has demonstrated the need for further work to be carried out to explore the possibilities of extending both availability of access, and the range of current youth provision and equipment locally. This work will achieve maximum benefit to young people if it is carried out by existing agencies (eg. Cornwall Youth Service, Penwith District Council, Hayle Community School etc) and local community groups/organisations (such as 'Friends of Ellis Park', 'Churches Together in Hayle' , and 'Hayle Market and Coastal Town Initiative') working in partnership.

APPENDIX 1
DATA COLLECTION SHEET

**HAYLE COMMUNITY SCHOOL CONSULTATIONS
MONDAY 12TH FEBRUARY 2007 – DATA COLLECTION SHEET**

No	GENDER		AGE						HOME AREA			
	Male	Female	11	12	13	14	15	16	Hayle East	Hayle West	St Erth	Other (specify)
1												
2												
3												
4												
5												
6												
7												
8												
9												
10												
11												
12												
13												
14												
15												
16												
17												
18												
19												
20												
21												
22												
23												
24												
25												
26												
27												
28												
29												
30												

APPENDIX 2
CONSULTATION POSTER

Is living in Hayle **COOL** ?

Or
**does it
drive you**



**Come and tell us what
you think about
freetime, and leisure
facilities, in this area.
In return you'll get.....**

**FREE DRINKS
and SWEETS!**

WHEN?

**LUNCHTIME ON
MONDAY 12TH
FEBRUARY**

WHERE?

**THE ENTRANCE
HALL AT THE FRONT
OF SCHOOL**

**.....and the satisfaction
of taking part in a
valuable community
project!!!!**

Be early to catch all the free stuff!!!

APPENDIX 3

PHOTOGRAPHIC EVIDENCE FROM GRAFFITI BOARDS

Do you think Hayle and St Erth are good places for young people to live? Please tell us your reasons too!!

NO Becoz hayle has nothing in it!!
A place for people to read poetry and get along

NO, becoz no entertainment!
There is nothing creative to do
As they do come be better as there near there was
No as it is full of old people
It's well bono because det is oppo
to H? WH? I HB U
OK! we need a cinema!!!!
it doesn't always feel safe
No! Not what we want to do
we because of the club

Do you think Hayle and St Erth are good places for young people to live? Please tell us your reasons too!!

More shops for girls age 12-18
More safe lights, cameras, protect
Yes but i think we should have some more excitement
More bars and amusements
More clubs like new look!! + surf
Cafe stuff & more shop in founroy
Job Place like new look south shore
Get read of watching stuff lol
Foundry shops
More more shop like surf in
Surf shops to and more more parks
Get club, pen, make some ware for the girls to go not just the boys
Make some ware for the girls to go not just the boys
Plunkin
we want surf shops Arcade
NO! NO! NO!
there is hardly any thing to do!
BMY place to us 2 have out (grr)

Cinema...
We need an amphitheatre in hayle near the rec near the skate park so skaters can have concerts + gigs it would make loads of money. Would only

What would make Hayle and St Erth better places for young people to live?

we need lights NO dirt & chert
 lights at hayle skate park!!
 agree with that WE NEED SWIMMING POOL
 Dirt Jumps
 Downhill course
 1st scary! 2nd scary!
 indoor swimming pool
 gigs I agree with that
 Hayle is boring
 shelters for teenagers -
 somewhere to go.
 skate boards
 need scary people
 cinema!!!
 we need an amphitheatre
 in hayle near the sea
 so skaters can have
 concerts & gigs
 it would make beds
 so money would only
 cost the price of the concrete
 to make a club area
 SO BUX IT!!!

What activities do you and your friends enjoy, and where do you usually spend your freetime together?

see CHICKEN!!
 Rec. hill
 at home
 St. Georges.
 beach!
 Shouldn't
 how
 home
 RUGBY
 Sooty
 he with
 PSP
 DS
 Swimming
 indoor
 internet
 SWEETS
 NETBALL
 killing people
 pools
 Youth Club
 STRUVO!!!
 listening to Music
 Football
 Pool

in the center of Hayle
 Copperhouse
 Doctors
 carli's bay
 youth club up High La
 Reawla

