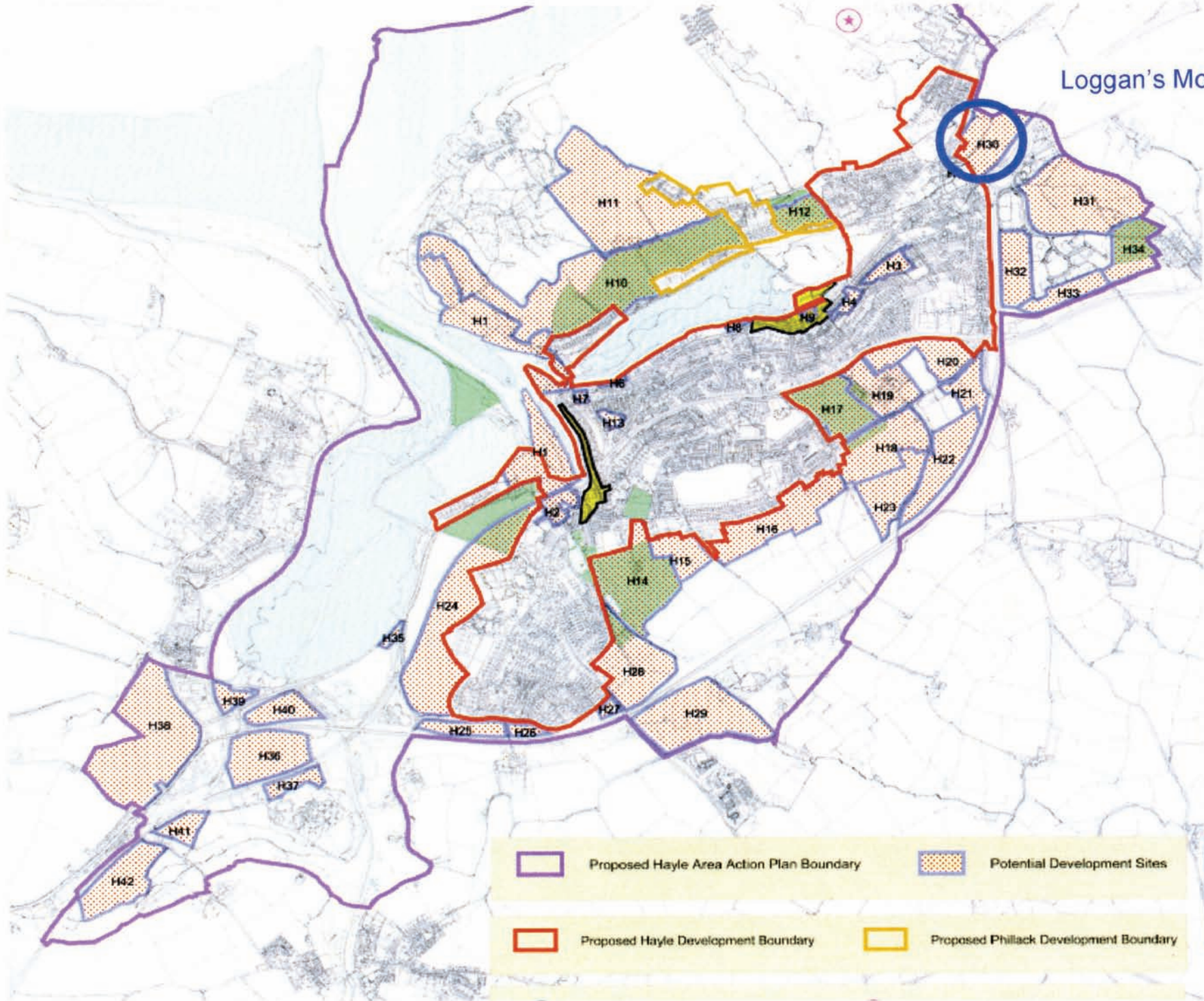


Loggan's Moor,



HAYLE AREA ACTION PLAN

- Proposed Hayle Area Action Plan Boundary
- Proposed Hayle Development Boundary
- Proposed Phillack Development Boundary
- Potential Development Sites

**POYNTON
BRADBURY
WYNTER
COLE**
-ARCHITECTS-
LTD

- Wave Hub
- Hayle Harbour
- Retail Park
- Hayle in Bloom
- Loggan's Mill

Wave Hub. Total cost: £20 million

Contact: Karen Clowes tel. 336747 & karen.clowes@penwith.gov.uk
 Wave Hub is a groundbreaking renewable energy project that aims to create the UK's first offshore facility by 2008. Work is underway to ensure that Hayle will profit from the estimated 700 jobs and contribution of £27 million a year to the economy as a result of the creation of the new wave power industry.



Hayle Harbour. Total cost: £175 million

Contact: Matt Barton tel. 336732 & matthew.barton@penwith.gov.uk
 The current masterplan proposed by ING Real Estate will transform the harbour and surrounding area providing 1,000 new jobs and 870 homes over a 10 year period. The employment opportunities brought about by the development are focused on four industries; fishing, tourism, IT and renewable energy. A planning application is anticipated before the end of 2006.



Hayle Retail Park. Total cost: £20 million

Contact: Matt Barton tel. 336732 & matthew.barton@penwith.gov.uk
 Next and Boots have already opened new stores at the Retail Park on the edge of town with Marks and Spencer opening a full-offer store early in 2007. The Retail Park has so far created 80 jobs and will hopefully be the catalyst for further investment in Hayle.



Hayle in Bloom. Total cost: £3,000

Contact: Brian Hosken tel. 336621 & brian.hosken@penwith.gov.uk
 Thanks to the excellent work of the Council's gardeners and the dedication of local volunteers, Hayle won a regional Gold in the 2006 Britain in Bloom competition and received the SW Tourism Cup for coming top in their group. Hayle also won the Abbiss Cup for Loggan's roundabout (pictured) which was judged as the best council horticultural display.



Loggans Mill. Total cost: £3 million (estimated)

Contact: Matt Barton tel. 336732 & matthew.barton@penwith.gov.uk
 The Council is working with the private sector on schemes to create a sustainable future for the Grade 2 listed Mill and provide much needed employment space. The Council has placed scaffolding around the Mill to support the existing structure and help preserve this landmark listed building.

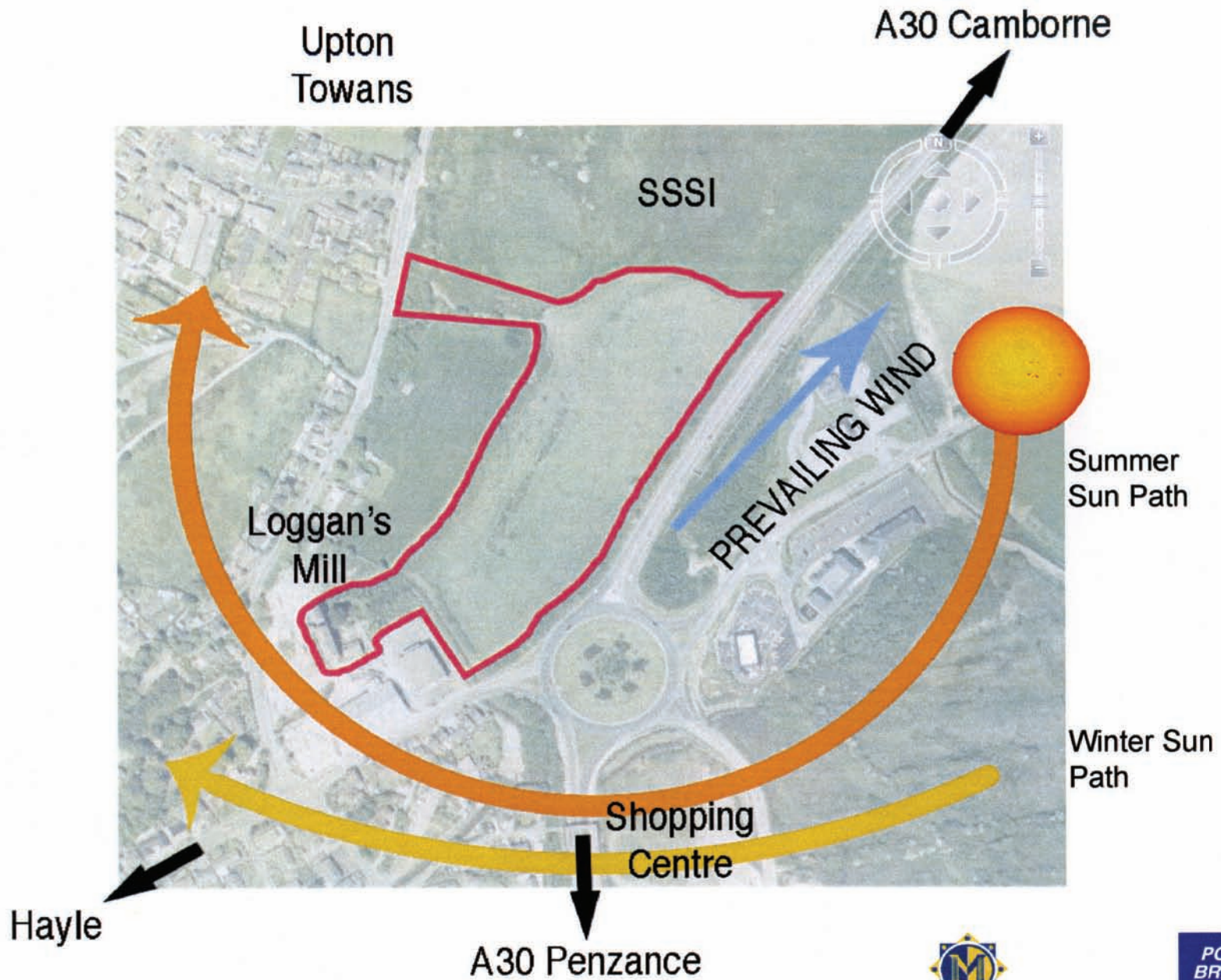


HAYLE REGENERATION

Taken from 'Spotlight on Hayle' article.

Loggan's Moor, Hayle

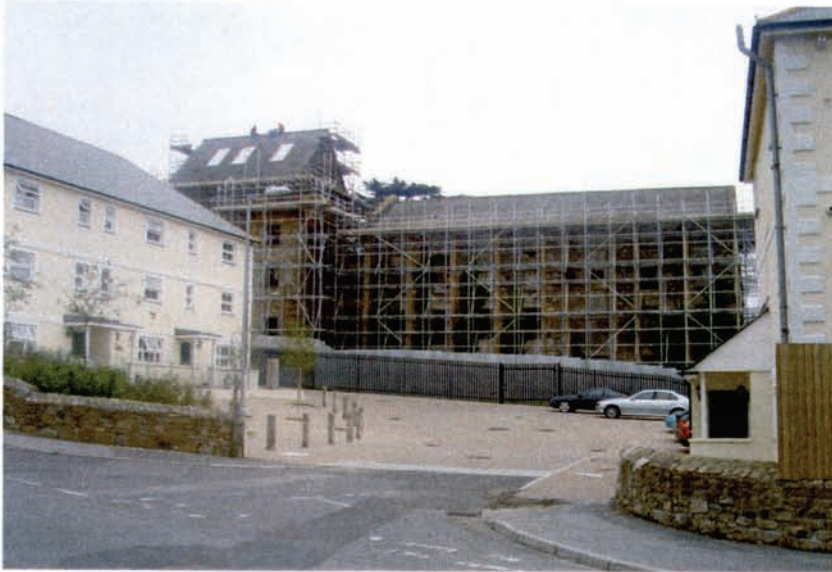




SITE CONTEXT

Loggan's Moor, Hayle



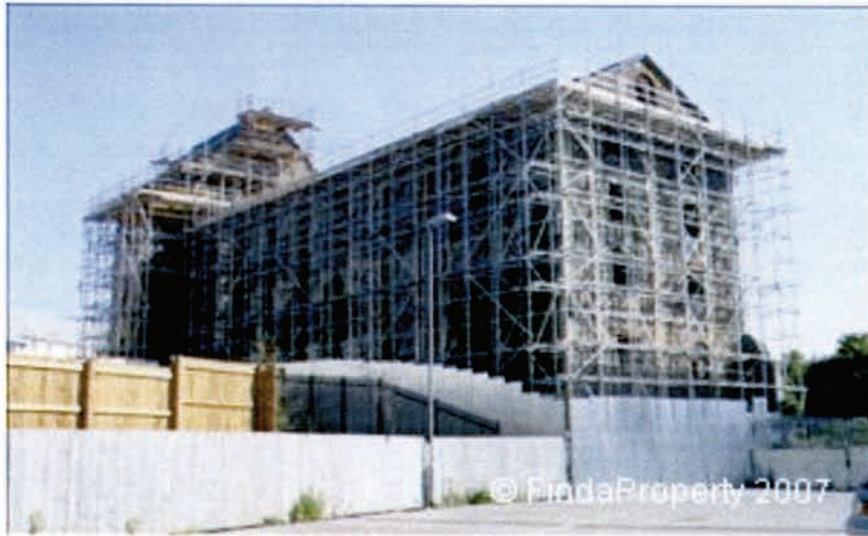


Loggan's Moor, Hayle



LOGGAN'S MILL





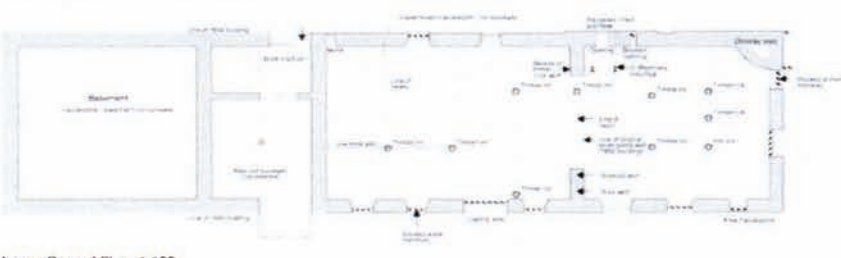
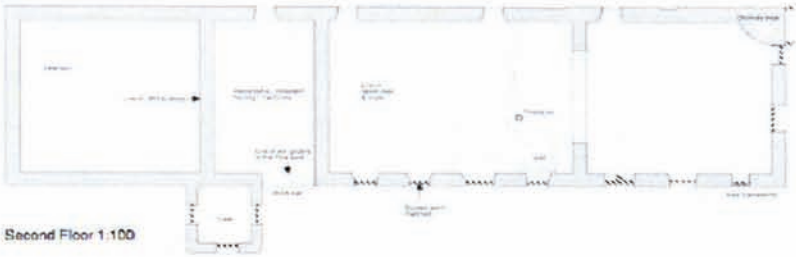
Loggan's Moor, Hayle



LOGGAN'S MILL

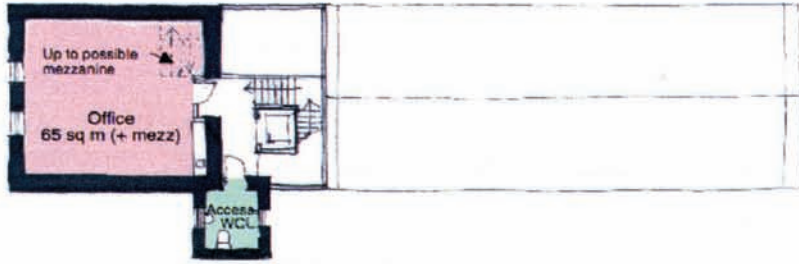


LOGGAN'S MILL EXISTING



Loggan's Moor, Hayle

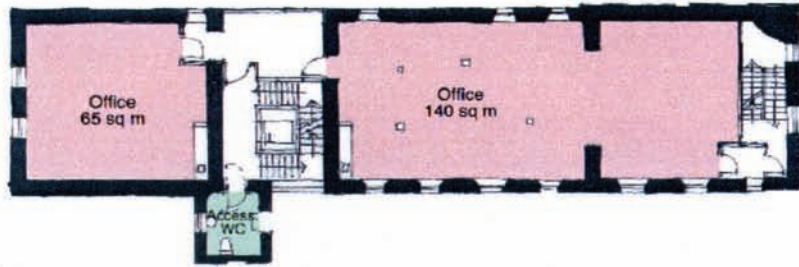




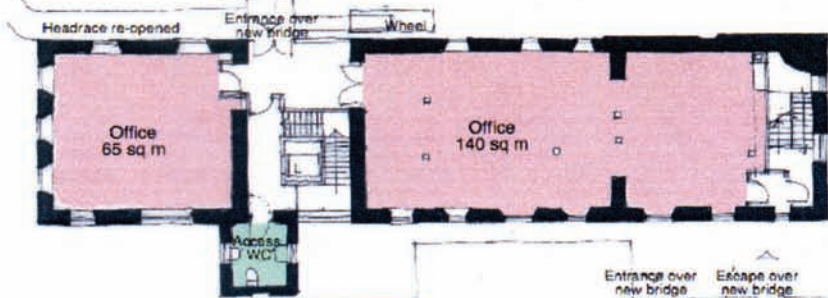
Third Floor Plan

Schedule of Approximate Net Lettable Internal Areas

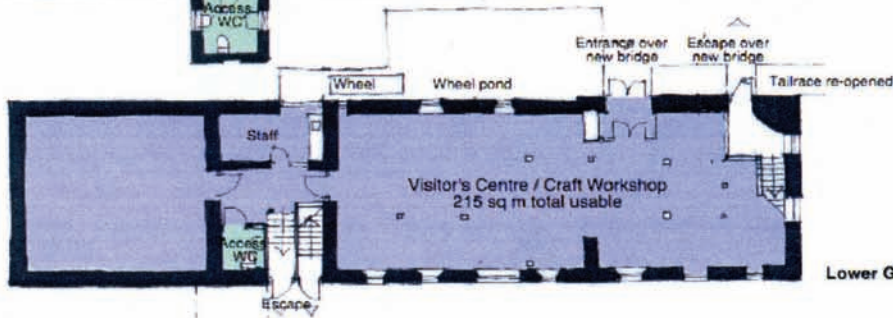
Lower Ground Floor	215 sqm
Ground Floor	205 sqm
First Floor	205 sqm
Second Floor	205 sqm
Third Floor	65 sqm
Total	895 sqm



First & Second Floor Plan
second floor plan as first floor - not illustrated



Upper Ground Floor Plan

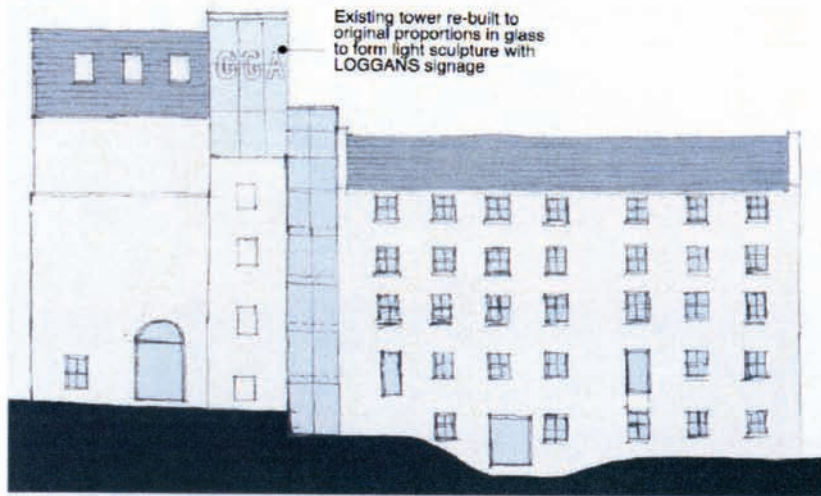


Lower Ground Floor Plan

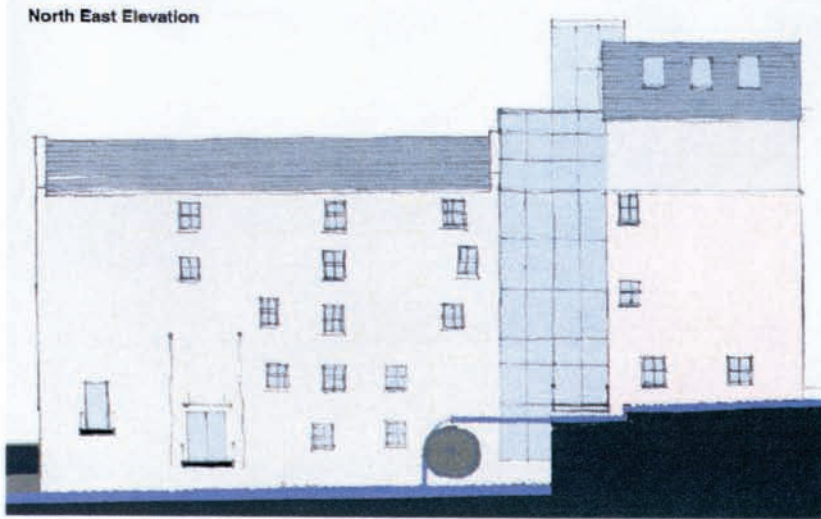
PROPOSED PLANS

Loggan's Moor, Hayle





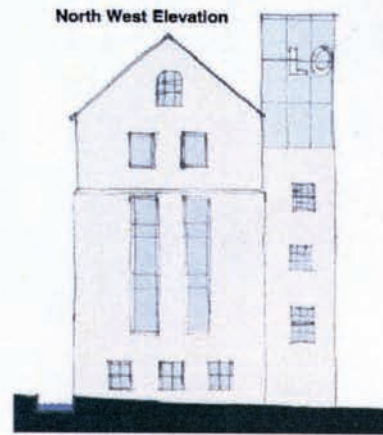
South West Elevation



North East Elevation



South East Elevation



North West Elevation

PROPOSED ELEVATIONS

Loggan's Moor, Hayle





CONCEPT PLAN

Loggan's Moor, Hayle





SKETCH IMAGE

Loggan's Moor, Hayle





SKETCH PROPOSALS

CONSULTATION PLAN

Loggan's Moor, Hayle



EMPLOYMENT SPACE

- 139,000 sq.ft new build total
- Ground Floor Workshops
- First Floor Offices
- 1,500 sq.ft typical modules
- 9600 sq.ft refurbished space in Loggan's Mill
- 60 bed hotel
- Leisure / Conference facility



Loggan's Moor, Hayle



